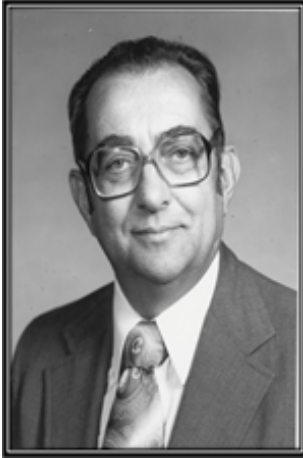


## The Class of 1997 Selects...

### William H. Dumbaugh (Class of 1947)



The key inventor of the glass technology that produced the popular Corelle tableware. A research fellow at Corning in Corning, New York until he retired in 1993, Dumbaugh held 51 U.S. patents, Corelle is the best known.

He led the team of scientists responsible for developing the glass technology that bonded three layers of glass into a strong but light laminate that could be decorated. Corning has manufactured more than two billion pieces of the popular dishes. Other key Dumbaugh inventions include infrared transmitting glasses used in the Redeye, Sidewinder and Stinger missiles; glass tubing for tungsten-halogen lamps used in automobile headlights, and liquid crystal displays used in laptop computers and other technology. An avid bowler and golfer, Dumbaugh was a prolific writer. He wrote more than 40 technical articles, including three book chapters and two encyclopedia articles. Dumbaugh attended Center Avenue Elementary School.

At Butler High, he worked on the Magnet yearbook staff and pursued his dream of becoming a chemist. William Dumbaugh died November 13, 1996.